

## BUCHA DE DESMONTAGEM



BUCHA DE DESMONTAGEM

- **BUCHAS DE DESMONTAGEM AH, AHX, AH ...G, AHX ...G**

Apesar do nome “Desmontagem”, são usadas para fixar rolamentos de furo cônico em eixos com ressalto para apoio(encosto) do rolamento. Na montagem, são empurradas para dentro do furo cônico do rolamento por meio de uma porca rosqueada no eixo ou com um tampão na ponta do eixo. A rosca que a bucha de desmontagem possui serve para desmontar o conjunto, daí seu nome Bucha de desmontagem. Seus acessórios: porca de fixação, arruela de trava e porca para desmontagem devem ser solicitadas em separado.

**Material:** Nodular BGL com características superiores ao normalizado DIN 1563 classe GJS 500-7 (antigo GGG50). Opcional em aço carbono.



BUCHA DE DESMONTAGEM  
HIDRÁULICA

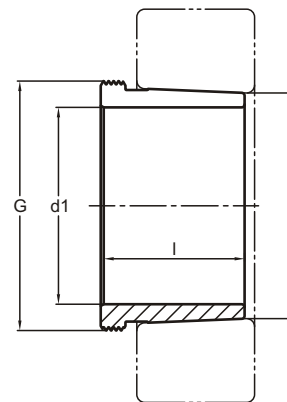
- **BUCHAS DE DESMONTAGEM HIDRÁULICA AOH, AOHX, AOH ...G, AOHX ...G**

Com as mesmas dimensões das buchas normais, são recomendadas para eixos ou conjuntos de grande porte, pois são providas de canaletas internas e externas de injeção de óleo, facilitando a montagem e principalmente a desmontagem. Disponíveis para eixos a partir de 150 mm.

**Material:** Nodular BGL com características superiores ao normalizado DIN 1563 classe GJS 500-7 (antigo GGG50). Opcional em aço carbono.

**Obs.:** Sufixo G é a nova padronização das rosca das buchas de desmontagem de diferentes séries.

## BUCHA DE DESMONTAGEM AH, AHX

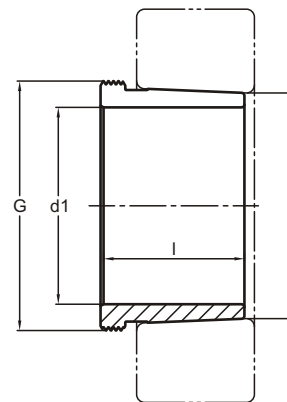


BUCHA DE DESMONTAGEM  
AH, AHX

Código	Código Hidráulica	d1 mm	d mm	l mm	G*	Peso Kg	PORCA + TRAVA DE MONTAGEM		FERRAMENTAS DE MONTAGEM		FERRAMENTAS DE DESMONTAGEM			Rolamentos
							Porca para montagem	Dispositivo de segurança	Chave de Gancho	Porca Hidráulica	Porca para desmontagem	Chave de Gancho	Porca Hidráulica	
AH 208		35	40	25	M 45X1,5	0,08	KM 7	MB 7	HN 7		KM 9	HN 9		1208K • 20208K
AH 308		35	40	29	M 45X1,5	0,08	KM 7	MB 7	HN 7		KM 9	HN 9		1308K • 21308K • 2208K • 22208K • C 2208K
AH 2308		35	40	40	M 45X1,5	0,11	KM 7	MB 7	HN 7		KM 9	HN 9		22308K • 2308K
AH 209		40	45	26	M 50X1,5	0,09	KM 8	MB 8	HN 8		KM 10	HN 10	HMV 10E	1209K • 20209K
AH 309		40	45	31	M 50X1,5	0,09	KM 8	MB 8	HN 8		KM 10	HN 10	HMV 10E	1309K • 21309K • 2209K • 22209K • C 2209K
AH 2309		40	45	44	M 50X1,5	0,14	KM 8	MB 8	HN 8		KM 10	HN 10	HMV 10E	22309K • 2309K
AH 210		45	50	28	M 55X2	0,114	KM 9	MB 9	HN 9		KM 11	HN 11	HMV 11E	1210K • 20210K
AHX 310		45	50	35	M 55X2	0,12	KM 9	MB 9	HN 9		KM 11	HN 11	HMV 11E	1310K • 21310K • 2210K • 22210K • C 2210K
AHX 2310		45	50	50	M 55X2	0,18	KM 9	MB 9	HN 9		KM 11	HN 11	HMV 11E	22310K • 2310K
AH 211		50	55	29	M 60X2	0,132	KM 10	MB 10	HN 10	HMV 10E	KM 12	HN 12	HMV 12E	1211K • 20211K
AHX 311		50	55	37	M 60X2	0,14	KM 10	MB 10	HN 10	HMV 10E	KM 12	HN 12	HMV 12E	1311K • 21311K • 2211K • 22211K • C 2211K
AHX 2311		50	55	54	M 60X2	0,22	KM 10	MB 10	HN 10	HMV 10E	KM 12	HN 12	HMV 12E	22311K • 2311K
AH 212		55	60	32	M 65X2	0,161	KM 11	MB 11	HN 11	HMV 11E	KM 13	HN 13	HMV 13E	1212K • 20212K
AHX 312		55	60	40	M 65X2	0,16	KM 11	MB 11	HN 11	HMV 11E	KM 13	HN 13	HMV 13E	1312K • 21312K • 2212K • 22212K • C 2212K
AHX 2312		55	60	58	M 65X2	0,26	KM 11	MB 11	HN 11	HMV 11E	KM 13	HN 13	HMV 13E	22312K • 2312K
AH 213		60	65	32,5	M 75X2	0,21	KM 12	MB 12	HN 12	HMV 12E	KM 15	HN 15	HMV 15E	1213K • 20213K
AH 313		60	65	42	M 75X2	0,22	KM 12	MB 12	HN 12	HMV 12E	KM 15	HN 15	HMV 15E	1313K • 21313K • 2213K • 22213K
AH 313 G		60	65	42	M 70X2	0,35	KM 12	MB 12	HN 12	HMV 12E	KM 14	HN 14	HMV 14E	1313K • 21313K • 2213K • 22213K • C 2213K
AH 2313		60	65	61	M 75X2	0,35	KM 12	MB 12	HN 12	HMV 12E	KM 15	HN 15	HMV 15E	22313K • 2313K
AH 2313 G		60	65	61	M 70X2	0,39	KM 12	MB 12	HN 12	HMV 12E	KM 14	HN 14	HMV 14E	22313K • 2313K
AH 214		65	70	33,5	M 80X2	0,24	KM 13	MB 13	HN 13	HMV 13E	KM 16	HN 16	HMV 16E	1214K • 20214K
AH 314		65	70	43	M 80X2	0,24	KM 13	MB 13	HN 13	HMV 13E	KM 16	HN 16	HMV 16E	1314K • 21314K • 2214K • 22214K
AH 314 G		65	70	43	M 75X2	0,24	KM 13	MB 13	HN 13	HMV 13E	KM 15	HN 15	HMV 15E	1314K • 21314K • 2214K • 22214K • C 2214K
AHX 2314		65	70	64	M 80X2	0,41	KM 13	MB 13	HN 13	HMV 13E	KM 16	HN 16	HMV 16E	22314K • 2314K
AHX 2314 G		65	70	64	M 75X2	0,42	KM 13	MB 13	HN 13	HMV 13E	KM 15	HN 15	HMV 15E	22314K • 2314K • C 2314K
AH 215		70	75	34,5	M 85X2	0,25	KM 14	MB 14	HN 14	HMV 14E	KM 17	HN 17	HMV 17E	1215K • 20215K
AH 315		70	75	45	M 85X2	0,28	KM 14	MB 14	HN 14	HMV 14E	KM 17	HN 17	HMV 17E	1315K • 21315K • 2215K • 22215K
AH 315 G		70	75	45	M 80X2	0,28	KM 14	MB 14	HN 14	HMV 14E	KM 16	HN 16	HMV 16E	1315K • 21315K • 2215K • 22215K • C 2215K
AHX 2315		70	75	68	M 85X2	0,47	KM 14	MB 14	HN 14	HMV 14E	KM 17	HN 17	HMV 17E	22315K • 2315K
AHX 2315 G		70	75	68	M 80X2	0,47	KM 14	MB 14	HN 14	HMV 14E	KM 16	HN 16	HMV 16E	22315K • 2315K • C 2315K
AH 216		75	80	35,5	M 90X2	0,28	KM 15	MB 15	HN 15	HMV 15E	KM 18	HN 18	HMV 18E	1216K • 20216K
AH 316		75	80	48	M 90X2	0,32	KM 15	MB 15	HN 15	HMV 15E	KM 18	HN 18	HMV 18E	1316K • 21316K • 2216K • 22216K C 2216K

\* Exemplo do código da rosca: M 50X1,5 M:rosca métrica, 50: diâmetro da rosca, 1,5: passo da rosca

## BUCHA DE DESMONTAGEM AH, AHX

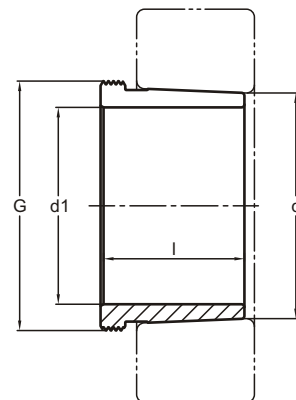


BUCHA DE DESMONTAGEM  
AH, AHX

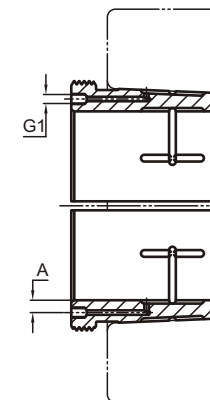
Código	Código Hidráulica	d1 mm	d mm	l mm	G*	Peso Kg	PORCA + TRAVA DE MONTAGEM		FERRAMENTAS DE MONTAGEM		FERRAMENTAS DE DESMONTAGEM			
							Porca para montagem	Dispositivo de segurança	Chave de Gancho	Porca Hidráulica	Porca para desmontagem	Chave de Gancho	Porca Hidráulica	Rolamentos
AHX 2316		75	80	71	M 90X2	0,52	KM 15	MB 15	HN 15	HMV 15E	KM 18	HN 18	HMV 18E	22316K • 2316K • C 2316K
AH 217		80	85	38,5	M 95X2	0,31	KM 16	MB 16	HN 16	HMV 16E	KM 19	HN 19	HMV 19E	1217K • 20217K
AHX 317		80	85	52	M 95X2	0,38	KM 16	MB 16	HN 16	HMV 16E	KM 19	HN 19	HMV 19E	1317K • 21317K • 2217K • 22217K • C 2217K
AHX 2317		80	85	74	M 95X2	0,58	KM 16	MB 16	HN 16	HMV 16E	KM 19	HN 19	HMV 19E	22317K • 2317K • C 2317K
AH 218		85	90	40	M 100X2	0,35	KM 17	MB 17	HN 17	HMV 17E	KM 20	HN 20	HMV 20E	1218K • 20218K
AHX 318		85	90	53	M 100X2	0,45	KM 17	MB 17	HN 17	HMV 17E	KM 20	HN 20	HMV 20E	1318K • 21318K • 2218K • 22218K • C 2218K
AHX 2318		85	90	79	M 100X2	0,68	KM 17	MB 17	HN 17	HMV 17E	KM 20	HN 20	HMV 20E	22318K • 2318K • C 2318K
AHX 3218		85	90	63	M 100X2	0,51	KM 17	MB 17	HN 17	HMV 17E	KM 20	HN 20	HMV 20E	23218K
AH 219		90	95	43	M 105X2	0,40	KM 18	MB 18	HN 18	HMV 18E	KM 21	HN 21	HMV 21E	1219K • 20219K
AHX 319		90	95	57	M 105X2	0,47	KM 18	MB 18	HN 18	HMV 18E	KM 21	HN 21	HMV 21E	1319K • 21319K • 2219K • 22219K • C 2219K
AHX 2319		90	95	85	M 105X2	0,80	KM 18	MB 18	HN 18	HMV 18E	KM 21	HN 21	HMV 21E	22319K • 2319K • C 2319K
AHX 3219		90	95	67	M 105X2	0,62	KM 18	MB 18	HN 18	HMV 18E	KM 21	HN 21	HMV 21E	23219K
AH 220		95	100	45	M 110X2	0,48	KM 19	MB 19	HN 19	HMV 19E	KM 22	HN 22	HMV 22E	1220K • 20220K
AHX 320		95	100	59	M 110X2	0,52	KM 19	MB 19	HN 19	HMV 19E	KM 22	HN 22	HMV 22E	1320K • 21320K • 2220K • 22220K • C 2220K
AHX 2320		95	100	90	M 110X2	0,90	KM 19	MB 19	HN 19	HMV 19E	KM 22	HN 22	HMV 22E	22320K • 2320K • C 2320K
AHX 3120		95	100	64	M 110X2	0,58	KM 19	MB 19	HN 19	HMV 19E	KM 22	HN 22	HMV 22E	23120K • C 3120K
AHX 3220		95	100	73	M 110X2	0,69	KM 19	MB 19	HN 19	HMV 19E	KM 22	HN 22	HMV 22E	23220K
AH 222		105	110	50	M 120X2	0,54	KM 21	MB 21	HN 21	HMV 21E	KM 24	HN 24	HMV 24E	1222K • 20222K
AHX 322		105	110	63	M 120X2	0,63	KM 21	MB 21	HN 21	HMV 21E	KM 24	HN 24	HMV 24E	21322K • 23022K
AHX 2322		105	110	98	M 125X2	1,22	KM 21	MB 21	HN 21	HMV 21E	KM 25	HN 25	HMV 25E	22322K
AHX 2322 G		105	110	98	M 120X2	1,22	KM 21	MB 21	HN 21	HMV 21E	KM 24	HN 24	HMV 24E	22322K
AHX 3122		105	110	68	M 120X2	0,68	KM 21	MB 21	HN 21	HMV 21E	KM 24	HN 24	HMV 24E	22222K • 23122K • C 2222K • C 3022K
AHX 3222		105	110	82	M 125X2	0,93	KM 21	MB 21	HN 21	HMV 21E	KM 25	HN 25	HMV 25E	23222K
AHX 3222 G		105	110	82	M 120X2	0,93	KM 21	MB 21	HN 21	HMV 21E	KM 24	HN 24	HMV 24E	23222K
AH 24122		105	110	82	M 115X2	0,64	KM 21	MB 21	HN 21	HMV 21E	KM 23	HN 23	HMV 23E	24122K30 • C 4122K30
AHX 2324		115	120	105	M 135X2	1,43	KM 23	MB 23	HN 23	HMV 23E	KM 27	HN 27	HMV 27E	22324K
AHX 2324 G		115	120	105	M 130X2	1,43	KM 23	MB 23	HN 23	HMV 23E	KM 26	HN 26	HMV 26E	22324K
AHX 3024		115	120	60	M 130X2	0,66	KM 23	MB 23	HN 23	HMV 23E	KM 26	HN 26	HMV 26E	23024K • C 3024K
AHX 3124		115	120	75	M 130X2	0,85	KM 23	MB 23	HN 23	HMV 23E	KM 26	HN 26	HMV 26E	22224K • 23124K • C 2224K
AHX 3224		115	120	90	M 135X2	1,16	KM 23	MB 23	HN 23	HMV 23E	KM 27	HN 27	HMV 27E	23224K
AHX 3224 G		115	120	90	M 130X2	1,16	KM 23	MB 23	HN 23	HMV 23E	KM 26	HN 26	HMV 26E	23224K • C 3224K
AH 24024		115	120	73	M 125X2	0,62	KM 23	MB 23	HN 23	HMV 23E	KM 25	HN 25	HMV 25E	24024K30 • C 4024K30

\* Exemplo do código da rosca: M 50X1,5 M:rosca métrica, 50: diâmetro da rosca, 1,5: passo da rosca

## BUCHA DE DESMONTAGEM AH, AHX, AOH, AOHX



BUCHA DE DESMONTAGEM  
AH, AHX

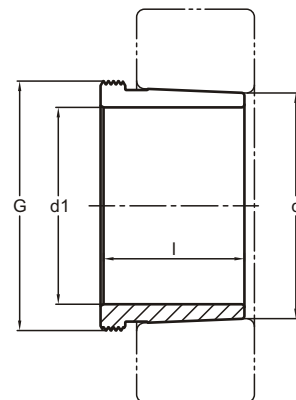


BUCHA DE DESMONTAGEM HIDRÁULICA  
AOH, AOHX

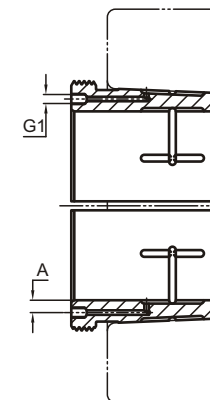
Código	Código Hidráulica	d1 mm	d mm	l mm	G*	Peso Kg	HIDRÁULICA		PORCA + TRAVA DE MONTAGEM		FERRAMENTAS DE MONTAGEM		FERRAMENTAS DE DESMONTAGEM			
							A	G1	Porca para montagem	Dispositivo de segurança	Chave de Gancho	Porca Hidráulica	Porca para desmontagem	Chave de Gancho	Porca Hidráulica	Rolamentos
AH 24124		115	120	93	M 130X2	0,90			KM 23	MB 23	HN 23	HMV 23E	KM 26	HN 26	HMV 26E	24124K30 • C 4124K30
AHX 2326		125	130	115	M 145X2	1,77			KM 25	MB 25	HN 25	HMV 25E	KM 29	HN 29	HMV 29E	22326K
AHX 2326 G		125	130	115	M 140X2	1,77			KM 25	MB 25	HN 25	HMV 25E	KM 28	HN 28	HMV 28E	22326K
AHX 3026		125	130	67	M 140X2	0,93			KM 25	MB 25	HN 25	HMV 25E	KM 28	HN 28	HMV 28E	23026K • C 3026K
AHX 3126		125	130	78	M 140X2	0,97			KM 25	MB 25	HN 25	HMV 25E	KM 28	HN 28	HMV 28E	22226K • 23126K • C 2226K
AHX 3226		125	130	98	M 145X2	1,41			KM 25	MB 25	HN 25	HMV 25E	KM 29	HN 29	HMV 29E	23226K
AHX 3226 G		125	130	98	M 140X2	1,41			KM 25	MB 25	HN 25	HMV 25E	KM 28	HN 28	HMV 28E	23226K
AH 24026		125	130	83	M 135X2	0,77			KM 25	MB 25	HN 25	HMV 25E	KM 27	HN 27	HMV 27E	24026K30 • C 4026K30
AH 24126		125	130	94	M 140X2	1,00			KM 25	MB 25	HN 25	HMV 25E	KM 28	HN 28	HMV 28E	24126K30 • C 4126K30
AHX 2328		135	140	125	M 155X3	2,08			KM 27	MB 27	HN 27	HMV 27E	KM 31	HN 31	HMV 31E	22328K
AHX 2328 G		135	140	125	M 150X2	2,08			KM 27	MB 27	HN 27	HMV 27E	KM 30	HN 30	HMV 30E	22328K
AHX 3028		135	140	68	M 150X2	0,89			KM 27	MB 27	HN 27	HMV 27E	KM 30	HN 30	HMV 30E	23028K • C 3028K
AHX 3128		135	140	83	M 150X2	1,13			KM 27	MB 27	HN 27	HMV 27E	KM 30	HN 30	HMV 30E	22228K • 23128K • C 2228K
AHX 3228		135	140	104	M 155X3	1,63			KM 27	MB 27	HN 27	HMV 27E	KM 31	HN 31	HMV 31E	23228K
AHX 3228 G		135	140	104	M 150X2	1,63			KM 27	MB 27	HN 27	HMV 27E	KM 30	HN 30	HMV 30E	23228K
AH 24028		135	140	83	M 145X2	0,83			KM 27	MB 27	HN 27	HMV 27E	KM 29	HN 29	HMV 29E	24028K30 • C 4028K30
AH 24128		135	140	99	M 150X2	1,25			KM 27	MB 27	HN 27	HMV 27E	KM 30	HN 30	HMV 30E	24128K30 • C 4128K30
AHX 2330		145	150	135	M 165X3	2,50			KM 29	MB 29	HN 29	HMV 29E	KM 33	HN 33	HMV 33E	22330K
AHX 2330 G		145	150	135	M 160X3	2,50			KM 29	MB 29	HN 29	HMV 29E	KM 32	HN 32	HMV 32E	22330K
AHX 3030		145	150	72	M 160X3	1,02			KM 29	MB 29	HN 29	HMV 29E	KM 32	HN 32	HMV 32E	23030K • C 3030K
AHX 3130		145	150	96	M 165X3	1,79			KM 29	MB 29	HN 29	HMV 29E	KM 33	HN 33	HMV 33E	22230K • 23130K
AHX 3130 G		145	150	96	M 160X3	1,79			KM 29	MB 29	HN 29	HMV 29E	KM 32	HN 32	HMV 32E	22230K • 23130K • C 2230K • C 3130K
AHX 3230		145	150	114	M 165X3	2,00			KM 29	MB 29	HN 29	HMV 29E	KM 33	HN 33	HMV 33E	23230K
AHX 3230 G		145	150	114	M 160X3	2,00			KM 29	MB 29	HN 29	HMV 29E	KM 32	HN 32	HMV 32E	23230K
AH 24030		145	150	90	M 155X3	0,95			KM 29	MB 29	HN 29	HMV 29E	KM 31	HN 31	HMV 31E	24030K30 • C 4030K30
AH 24130		145	150	115	M 160X3	1,46			KM 29	MB 29	HN 29	HMV 29E	KM 32	HN 32	HMV 32E	24130K30 • C 4130K30
AH 2332	AOH 2332	150	160	140	M 180X3	4,20	5.0	M6	KM 30	MB 30	HN 30	HMV 30E	KM 36	HN 36	HMV 36E	22332K
AH 2332 G	AOH 2332 G	150	160	140	M 170X3	4,20	4.0	M6	KM 30	MB 30	HN 30	HMV 30E	KM 34	HN 34	HMV 34E	22332K
AH 3032	AOH 3032	150	160	77	M 170X3	1,83	4.2	M6	KM 30	MB 30	HN 30	HMV 30E	KM 34	HN 34	HMV 34E	23032K • C 3032K
AH 3132	AOH 3132	150	160	103	M 180X3	2,88	4.7	M6	KM 30	MB 30	HN 30	HMV 30E	KM 36	HN 36	HMV 36E	22232K • 23132K
AH 3132 G	AOH 3132 G	150	160	103	M 170X3	2,88	4.0	M6	KM 30	MB 30	HN 30	HMV 30E	KM 34	HN 34	HMV 34E	22232K • 23132K • C 3132K
AH 3232	AOH 3232	150	160	124	M 180X3	3,60	5.0	M6	KM 30	MB 30	HN 30	HMV 30E	KM 36	HN 36	HMV 36E	23232K
AH 3232 G	AOH 3232 G	150	160	124	M 170X3	3,60	4.0	M6	KM 30	MB 30	HN 30	HMV 30E	KM 34	HN 34	HMV 34E	23232K • C 3232K
AH 24032		150	160	95	M 170X3	2,07			KM 30	MB 30	HN 30	HMV 30E	KM 34	HN 34	HMV 34E	24032K30 • C 4032K30
AH 24132		150	160	124	M 170X3	2,67			KM 30	MB 30	HN 30	HMV 30E	KM 34	HN 34	HMV 34E	24132K30 • C 4132K30

\* Exemplo do código da rosca: M 50X1,5 M:rosca métrica, 50: diâmetro da rosca, 1,5: passo da rosca

## BUCHA DE DESMONTAGEM AH, AHX, AOH, AOHX



BUCHA DE DESMONTAGEM  
AH, AHX

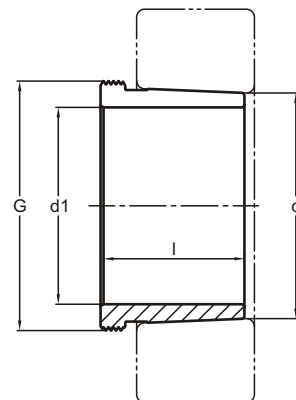


BUCHA DE DESMONTAGEM HIDRÁULICA  
AOH, AOHX

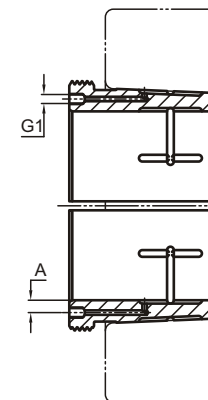
Código	Código Hidráulica	d1 mm	d mm	l mm	G*	Peso Kg	HIDRÁULICA			PORCA + TRAVA DE MONTAGEM		FERRAMENTAS DE MONTAGEM		FERRAMENTAS DE DESMONTAGEM			
							A	G1	M6	Porca para montagem	Dispositivo de segurança	Chave de Gancho	Porca Hidráulica	Porca para desmontagem	Chave de Gancho	Porca Hidráulica	Rolamentos
AH 2334	AOH 2334	160	170	146	M 190X3	4,72	5.2	M6	KM 32	MB 32	HN 32	HMV 32E	KM 38	HN 38	HMV 38E	22334K	
AH 2334 G	AOH 2334 G	160	170	146	M 180X3	4,72	4.0	M6	KM 32	MB 32	HN 32	HMV 32E	KM 36	HN 36	HMV 36E	22334K	
AH 3034	AOH 3034	160	170	85	M 180X3	2,18	4.2	M6	KM 32	MB 32	HN 32	HMV 32E	KM 36	HN 36	HMV 36E	23034K • C 3034K	
AH 3134	AOH 3134	160	170	104	M 190X3	3,09	4.7	M6	KM 32	MB 32	HN 32	HMV 32E	KM 38	HN 38	HMV 38E	22234K • 23134K	
AH 3134 G	AOH 3134 G	160	170	104	M 180X3	3,09	4.0	M6	KM 32	MB 32	HN 32	HMV 32E	KM 36	HN 36	HMV 36E	22234K • 23134K • C 2234K • C 3134K	
AH 3234	AOH 3234	160	170	134	M 190X3	4,23	5.0	M6	KM 32	MB 32	HN 32	HMV 32E	KM 38	HN 38	HMV 38E	23234K	
AH 3234 G	AOH 3234 G	160	170	134	M 180X3	4,23	4.0	M6	KM 32	MB 32	HN 32	HMV 32E	KM 36	HN 36	HMV 36E	23234K	
AH 3934	AOH 3934	160	170	59	M 180X3	1,59	4.0	M6	KM 32	MB 32	HN 32	HMV 32E	HMLL 36	HN 32	HMV 36E	23934K	
AH 24034		160	170	106	M 180X3	2,44			KM 32	MB 32	HN 32	HMV 32E	KM 36	HN 36	HMV 36E	24034K30 • C 4034K30	
AH 24134		160	170	125	M 180X3	2,95			KM 32	MB 32	HN 32	HMV 32E	KM 36	HN 36	HMV 36E	24134K30 • C 4134K30	
AH 2236	AOH 2236	170	180	105	M 200X3	3,30	4.5	M6	KM 34	MB 34	HN 34	HMV 34E	KM 40	HN 40	HMV 40E	22236K	
AH 2236 G	AOH 2236 G	170	180	105	M 190X3	3,30	4.0	M6	KM 34	MB 34	HN 34	HMV 34E	KM 38	HN 38	HMV 38E	22236K	
AH 2336	AOH 2336	170	180	154	M 200X3	5,35	5.2	M6	KM 34	MB 34	HN 34	HMV 34E	KM 40	HN 40	HMV 40E	22336K	
AH 2336 G	AOH 2336 G	170	180	154	M 190X3	5,35	4.0	M6	KM 34	MB 34	HN 34	HMV 34E	KM 38	HN 38	HMV 38E	22336K	
AH 3036	AOH 3036	170	180	92	M 190X3	2,53	4.5	M6	KM 34	MB 34	HN 34	HMV 34E	KM 38	HN 38	HMV 38E	23036K • C 3036K	
AH 3136	AOH 3136	170	180	116	M 200X3	3,77	5.0	M6	KM 34	MB 34	HN 34	HMV 34E	KM 40	HN 40	HMV 40E	23136K	
AH 3136 G	AOH 3136 G	170	180	116	M 190X3	3,77	4.0	M6	KM 34	MB 34	HN 34	HMV 34E	KM 38	HN 38	HMV 38E	23136K • C 3136K	
AH 3236	AOH 3236	170	180	140	M 200X3	4,76	5.2	M6	KM 34	MB 34	HN 34	HMV 34E	KM 40	HN 40	HMV 40E	23236K	
AH 3236 G	AOH 3236 G	170	180	140	M 190X3	4,76	4.0	M6	KM 34	MB 34	HN 34	HMV 34E	KM 38	HN 38	HMV 38E	23236K • C 3236K	
AH 3936	AOH 3936	170	180	66	M 190X3	1,91	4.0	M6	KM 34	MB 34	HN 34	HMV 34E	HMLL 38	HN 34	HMV 38E	23936K	
AH 24036		170	180	116	M 190X3	2,86			KM 34	MB 34	HN 34	HMV 34E	KM 38	HN 38	HMV 38E	24036K30 • C 4036K30	
AH 24136		170	180	134	M 190X3	3,37			KM 34	MB 34	HN 34	HMV 34E	KM 38	HN 38	HMV 38E	24136K30 • C 4136K30	
AH 2238	AOH 2238	180	190	112	TR 210X4	3,78	4.8	M6	KM 36	MB 36	HN 36	HMV 36E	HM 42T	HN 40	HMV 42E	22238K	
AH 2238 G	AOH 2238 G	180	190	112	M 200X3	3,78	4.0	M6	KM 36	MB 36	HN 36	HMV 36E	KM 40	HN 40	HMV 40E	22238K • C 2238K	
AH 2338	AOH 2338	180	190	160	TR 210X4	5,91	5.5	M6	KM 36	MB 36	HN 36	HMV 36E	HM 42T	HN 40	HMV 42E	22338K	
AH 2338 G	AOH 2338 G	180	190	160	M 200X3	5,91	4.0	M6	KM 36	MB 36	HN 36	HMV 36E	KM 40	HN 40	HMV 40E	22338K	
AH 3038	AOH 3038	180	190	96	TR 205X4	3,01	4.5	M6	KM 36	MB 36	HN 36	HMV 36E	HML 41T	HN 40	HMV 41E	23038K	
AH 3038 G	AOH 3038 G	180	190	96	M 200X3	3,01	4.0	M6	KM 36	MB 36	HN 36	HMV 36E	KM 40	HN 40	HMV 40E	23038K • C 3038K	
AH 3138	AOH 3138	180	190	125	TR 210X4	4,33	5.0	M6	KM 36	MB 36	HN 36	HMV 36E	HM 42T	HN 40	HMV 42E	23138K	
AH 3138 G	AOH 3138 G	180	190	125	M 200X3	4,33	4.0	M6	KM 36	MB 36	HN 36	HMV 36E	KM 40	HN 40	HMV 40E	23138K • C 3138K	
AH 3238	AOH 3238	180	190	145	TR 210X4	5,20	5.2	M6	KM 36	MB 36	HN 36	HMV 36E	HM 42T	HN 40	HMV 42E	23238K	
AH 3238 G	AOH 3238 G	180	190	145	M 200X3	5,20	4.0	M6	KM 36	MB 36	HN 36	HMV 36E	KM 40	HN 40	HMV 40E	23238K	
AH 3938	AOH 3938	180	190	66	M 200X3	2,02	4.0	M6	KM 36	MB 36	HN 36	HMV 36E	HMLL 40	HN 38	HMV 40E	23938K	
AH 24038		180	190	118	M 200X3	3,10			KM 36	MB 36	HN 36	HMV 36E	KM 40	HN 40	HMV 40E	24038K30 • C 4038K30	
AH 24138		180	190	146	M 200X3	3,91			KM 36	MB 36	HN 36	HMV 36E	KM 40	HN 40	HMV 40E	24138K30 • C 4138K30	

\* Exemplo do código da rosca: TR 300X4 TR:rosca métrica trapezoidal, 300: diâmetro da rosca, 4: passo da rosca

## BUCHA DE DESMONTAGEM AH, AHX, AOH, AOHX



BUCHA DE DESMONTAGEM  
AH, AHX

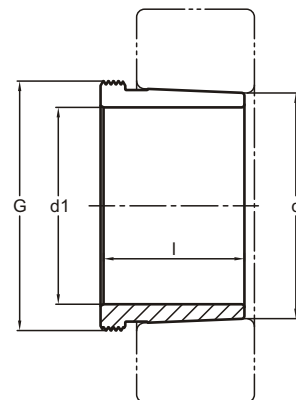


BUCHA DE DESMONTAGEM HIDRÁULICA  
AOH, AOHX

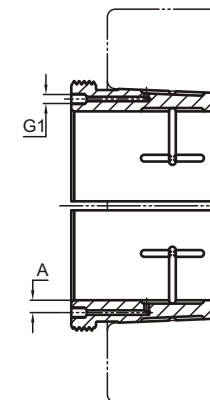
Código	Código Hidráulica	d1 mm	d mm	l mm	G* mm	Peso Kg	PORCA + TRAVA DE MONTAGEM			FERRAMENTAS DE MONTAGEM		FERRAMENTAS DE DESMONTAGEM				
							HIDRÁULICA A	G1	Dispositivo de segurança	Chave de Gancho	Porca Hidráulica	Porca para desmontagem	Chave de Gancho	Porca Hidráulica	Rolamentos	
AH 2240		190	200	118	TR 220X4	4,27	4.8	M6	KM 38	MB 38	HN 38	HMV 38E	HM 44T	HN 44	HMV 44E	22240K
AH 2340	AOH 2340	190	200	170	TR 220X4	6,75	5.5	M6	KM 38	MB 38	HN 38	HMV 38E	HM 44T	HN 44	HMV 44E	22340K
AH 3040	AOH 3040	190	200	102	TR 215X4	3,36	4.5	M6	KM 38	MB 38	HN 38	HMV 38E	HML 43T	HN 40	HMV 43E	23040K
AH 3040 G	AOH 3040 G	190	200	102	TR 210X4	3,36	3.8	M6	KM 38	MB 38	HN 38	HMV 38E	HM 42T	HN 40	HMV 42E	23040K • C 3040K
AH 3140	AOH 3140	190	200	134	TR 220X4	4,98	5.2	M6	KM 38	MB 38	HN 38	HMV 38E	HM 44T	HN 44	HMV 44E	23140K • C 3140K
AH 3240	AOH 3240	190	200	153	TR 220X4	5,82	5.5	M6	KM 38	MB 38	HN 38	HMV 38E	HM 44T	HN 44	HMV 44E	23240K
AH 3940	AOH 3940	190	200	77	TR 210X4	2,62	3.8	M6	KM 38	MB 38	HN 38	HMV 38E	HMLL 42T	HN 40	HMV 42E	23940K
AH 24040		190	200	127	TR 210X4	3,54			KM 38	MB 38	HN 38	HMV 38E	HM 42T	HN 40	HMV 42E	24040K30 • C 4040K30
AH 24140		190	200	158	TR 210X4	4,50			KM 38	MB 38	HN 38	HMV 38E	HM 42T	HN 40	HMV 42E	24140K30 • C 4140K30
AH 2244	AOH 2244	200	220	130	TR 240X4	8,12	8.0	G1/8"	KM 40	MB 40	HN 40	HMV 40E	HM 48T		HMV 48E	22244K • C 2244K
AH 2344	AOH 2344	200	220	181	TR 240X4	12,00	8.7	G1/8"	KM 40	MB 40	HN 40	HMV 40E	HM 48T		HMV 48E	22344K • 23244K
AH 3044	AOH 3044	200	220	111	TR 235X4	6,59	7.7	G1/8"	KM 40	MB 40	HN 40	HMV 40E	HML 47T	HN 44	HMV 47E	23044K
AH 3044 G	AOH 3044 G	200	220	111	TR 230X4	6,59	6.3	G1/8"	KM 40	MB 40	HN 40	HMV 40E	HM 46T		HMV 46E	23044K • C 3044K
AH 3144	AOH 3144	200	220	145	TR 240X4	9,37	8.2	G1/8"	KM 40	MB 40	HN 40	HMV 40E	HM 48T		HMV 48E	23144K • C 3144K
AH 3944	AOH 3944	200	220	77	TR 230X4	4,83			M8 KM 40	MB 40	HN 40	HMV 40E	HMLL 46T	HN 40	HMV 46E	23944K
AH 24044	AOH 24044	200	220	138	TR 230X4	7,38	7.0	M6	KM 40	MB 40	HN 40	HMV 40E	HM 46T		HMV 46E	24044K30 • C 4044K30
AH 24144	AOH 24144	200	220	170	TR 230X4	9,23	7.0	G1/8"	KM 40	MB 40	HN 40	HMV 40E	HM 46T		HMV 46E	24144K30
AH 2248	AOH 2248	220	240	144	TR 260X4	11,10	8.2	G1/8"	HM 44T	MB 44	HN 44	HMV 44E	HM 52T		HMV 52E	22248K
AH 2348	AOH 2348	220	240	189	TR 260X4	13,94	8.7	G1/8"	HM 44T	MB 44	HN 44	HMV 44E	HM 52T		HMV 52E	22348K • 23248K
AH 3048	AOH 3048	220	240	116	TR 260X4	7,95	7.7	G1/8"	HM 44T	MB 44	HN 44	HMV 44E	HML 52T		HMV 52E	23048K • C 3048K
AH 3148	AOH 3148	220	240	154	TR 260X4	10,97	8.4	G1/8"	HM 44T	MB 44	HN 44	HMV 44E	HM 52T		HMV 52E	23148K • C 3148K
AH 3948	AOH 3948	220	240	77	TR 250X4	5,29			M8 HM 3044	MS 3044	HN 44	HMV 44E	HMLL 50T		HMV 50E	23948K
AH 24048	AOH 24048	220	240	138	TR 250X4	8,03	7.0	M6	HM 44T	MB 44	HN 44	HMV 44E	HM 50T		HMV 50E	24048K30
AH 24148	AOH 24148	220	240	180	TR 260X4	11,40	7.0	G1/8"	HM 44T	MB 44	HN 44	HMV 44E	HM 52T		HMV 52E	24148K30
AH 2252	AOH 2252	240	260	155	TR 290X4	14,00	8.4	G1/8"	HM 48T	MB 48		HMV 48E	HM 58T		HMV 58E	22252K
AH 2252 G	AOH 2252 G	240	260	155	TR 280X4	14,00	8.4	G1/8"	HM 3048	MS 3048-MS 3052		HMV 48E	HM 3056		HMV 56E	22252K
AH 2352	AOH 2352	240	260	205	TR 290X4	14,80	8.7	G1/8"	HM 48T	MB 48		HMV 48E	HM 58T		HMV 58E	22352K • 23252K
AH 2352 G	AOH 2352 G	240	260	205	TR 280X4	14,80	8.7	G1/8"	HM 3048	MS 3048-MS 3052		HMV 48E	HM 3056		HMV 56E	22352K • 23252K
AH 3052	AOH 3052	240	260	128	TR 280X4	9,70	8.0	G1/8"	HM 48T	MB 48		HMV 48E	HML 56T		HMV 56E	23052K • C 3052K
AH 3152	AOH 3152	240	260	172	TR 290X4	14,39	8.7	G1/8"	HM 48T	MB 48		HMV 48E	HM 58T		HMV 58E	23152K
AH 3152 G	AOH 3152 G	240	260	172	TR 280X4	14,39	8.7	G1/8"	HM 3048	MS 3048-MS 3052		HMV 48E	HM 3056		HMV 56E	23152K • C 3152K
AH 3952	AOH 3952	240	260	94	TR 275X4	7,36			M8 HM 3048	MS 3048-MS 3052		HMV 48E	HMLL 55T			23952K
AH 24052	AOH 24052	240	260	162	TR 270X4	10,43	7.0	M6	HM 48T	MB 48		HMV 48E	HM 54T		HMV 54E	24052K30
AH 24052 G	AOH 24052 G	240	260	162	TR 280X4	10,43	7.0	M6	HM 3048	MS 3048-MS 3052		HMV 48E	HM 3056		HMV 56E	24052K30
AH 24152	AOH 24152	240	260	202	TR 280X4	13,80	7.4	G1/8"	HM 48T	MB 48		HMV 48E	HM 56T		HMV 56E	24152K30

\* Exemplo do código da rosca: TR 300X4 TR:rosca métrica trapezoidal, 300: diâmetro da rosca, 4: passo da rosca

## BUCHA DE DESMONTAGEM AH, AHX, AOH, AOHX



BUCHA DE DESMONTAGEM  
AH, AHX

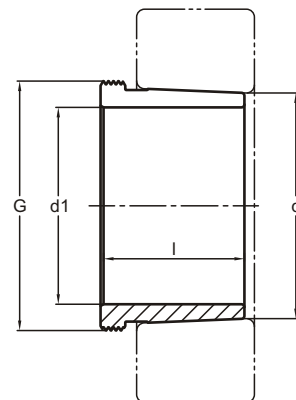


BUCHA DE DESMONTAGEM HIDRÁULICA  
AOH, AOHX

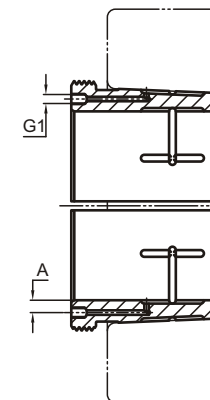
Código	Código Hidráulica	d1 mm	d mm	l mm	G*	Peso Kg	PORCA + TRAVA DE MONTAGEM				FERRAMENTAS DE MONTAGEM		FERRAMENTAS DE DESMONTAGEM		
							HIDRÁULICA A	HIDRÁULICA G1	Porca para montagem	Dispositivo de segurança	Chave de Gancho	Porca Hidráulica	Porca para desmontagem	Chave de Gancho	Porca Hidráulica
AH 2256	AOH 2256	260	280	155	TR 310X5	15,20	8.4	G1/8"	HM 52T	MB 52		HMV 52E	HM 62T	HMV 62E	22256K
AH 2256 G	AOH 2256 G	260	280	155	TR 300X4	15,20	8.4	G1/8"	HM 3052	MS 3048-MS 3052		HMV 52E	HM 3160	HMV 60E	22256K
AH 2356	AOH 2356	260	280	212	TR 310X5	19,80	8.9	G1/8"	HM 52T	MB 52		HMV 52E	HM 62T	HMV 62E	22356K • 23256K
AH 2356 G	AOH 2356 G	260	280	212	TR 300X4	19,80	8.9	G1/8"	HM 3052	MS 3048-MS 3052		HMV 52E	HM 3160	HMV 60E	22356K • 23256K
AH 3056	AOH 3056	260	280	131	TR 300X4	10,60	8.0	G1/8"	HM 52T	MB 52		HMV 52E	HML 60T	HMV 60E	23056K • C 3056K
AH 3156	AOH 3156	260	280	175	TR 310X5	15,80	8.7	G1/8"	HM 52T	MB 52		HMV 52E	HM 62T	HMV 62E	23156K
AH 3156 G	AOH 3156 G	260	280	175	TR 300X4	15,80	8.7	G1/8"	HM 3052	MS 3048-MS 3052		HMV 52E	HM 3160	HMV 60E	23156K • C 3156K
AH 3956	AOH 3956	260	280	94	TR 295X4	8,02		M8	HM 3052	MS 3048-MS 3052		HMV 52E	HMLL 59T		23956K
AH 24056	AOH 24056	260	280	162	TR 290X4	11,40	7.0	M6	HM 52T	MB 52		HMV 52E	HM 58T	HMV 58E	24056K30
AH 24056 G	AOH 24056 G	260	280	162	TR 300X4	11,40	7.0	M6	HM 3052	MS 3048-MS 3052		HMV 52E	HM 3160	HMV 60E	24056K30
AH 24156	AOH 24156	260	280	202	TR 300X4	15,20	7.5	G1/8"	HM 52T	MB 52		HMV 52E	HM 60T	HMV 60E	24156K30
AH 2260	AOH 2260	280	300	170	TR 330X5	18,10	8.7	G1/8"	HM 56T	MB 56		HMV 56E	HM 66T	HMV 66E	22260K
AH 2260 G	AOH 2260 G	280	300	170	TR 320X5	18,10	8.7	G1/8"	HM 3056	MS 3056		HMV 56E	HM 3164	HMV 64E	22260K
AH 3060	AOH 3060	280	300	145	TR 320X5	14,40	8.2	G1/8"	HM 56T	MB 56		HMV 56E	HML 64T	HMV 64E	23060K • C 3060K
AH 3160	AOH 3160	280	300	192	TR 330X5	19,00	9.0	G1/8"	HM 56T	MB 56		HMV 56E	HM 66T	HMV 66E	23160K
AH 3160 G	AOH 3160 G	280	300	192	TR 320X5	19,00	8.0	G1/8"	HM 3056	MS 3056		HMV 56E	HM 3164	HMV 64E	23160K • C 3160K
AH 3260	AOH 3260	280	300	228	TR 330X5	23,20	9.7	G1/8"	HM 56T	MB 56		HMV 56E	HM 66T	HMV 66E	22360K • 23260K
AH 3260 G	AOH 3260 G	280	300	228	TR 320X5	23,20	9.7	G1/8"	HM 3056	MS 3056		HMV 56E	HM 3164	HMV 64E	22360K • 23260K
AH 3960	AOH 3960	280	300	112	TR 315X5	10,50		M8	HM 3056	MS 3056		HMV 56E	HMLL 63T		23960K
AH 24060	AOH 24060	280	300	184	TR 310X5	14,00	7.0	M6	HM 56T	MB 56		HMV 56E	HM 62T	HMV 62E	24060K30
AH 24060 G	AOH 24060 G	280	300	184	TR 320X5	14,00	7.0	M6	HM 3056	MS 3056		HMV 56E	HM 3164	HMV 64E	24060K30 • C 4060K30
AH 24160	AOH 24160	280	300	224	TR 320X5	18,20	7.4	G1/8"	HM 56T	MB 56		HMV 56E	HM 64T	HMV 64E	24160K30
AH 2264	AOH 2264	300	320	180	TR 350X5	20,20	8.7	G1/8"	HM 3160	MS 3160		HMV 60E	HM 70T	HMV 70E	22264K
AH 2264 G	AOH 2264 G	300	320	180	TR 340X5	20,20	8.7	G1/8"	HM 3060	MS 3060		HMV 60E	HM 3168	HMV 68E	22264K
AH 3064	AOH 3064	300	320	149	TR 345X5	14,80	8.2	G1/8"	HM 3060	MS 3060		HMV 60E	HML 69T	HMV 69E	23064K
AH 3064 G	AOH 3064 G	300	320	149	TR 340X5	14,80	8.2	G1/8"	HM 3060	MS 3060		HMV 60E	HM 3068	HMV 68E	23064K • C 3064K
AH 3164	AOH 3164	300	320	209	TR 350X5	22,60	9.5	G1/8"	HM 3160	MS 3160		HMV 60E	HM 70T	HMV 70E	23164K
AH 3164 G	AOH 3164 G	300	320	209	TR 340X5	22,60	9.5	G1/8"	HM 3060	MS 3060		HMV 60E	HM 3168	HMV 68E	23164K • C 3164K
AH 3264	AOH 3264	300	320	246	TR 350X5	27,40	10.0	G1/8"	HM 3160	MS 3160		HMV 60E	HM 70T	HMV 70E	22364K • 23264K
AH 3264 G	AOH 3264 G	300	320	246	TR 340X5	27,40	10.0	G1/8"	HM 3060	MS 3060		HMV 60E	HM 3168	HMV 68E	22364K • 23264K
AH 3964	AOH 3964	300	320	112	TR 335X5	11,20		M8	HM 3060	MS 3060		HMV 60E	HMLL 67T		23964K
AH 24064	AOH 24064	300	320	184	TR 330X5	16,60	7.0	M6	HM 3160	MS 3160		HMV 60E	HM 66T	HMV 66E	24064K30
AH 24064 G	AOH 24064 G	300	320	184	TR 340X5	16,60	7.0	M6	HM 3060	MS 3060		HMV 60E	HM 3168	HMV 68E	24064K30
AH 24164	AOH 24164	300	320	242	TR 340X5	21,20	7.9	G1/8"	HM 3160	MS 3160		HMV 60E	HM 68T	HMV 68E	24164K30
AH 3068	AOH 3068	320	340	162	TR 365X5	17,30	8.4	G1/8"	HM 3064	MS 3064-MS 3068		HMV 64E	HML 73T	HMV 73E	23068K
AH 3068 G	AOH 3068 G	320	340	162	TR 360X5	17,30	8.4	G1/8"	HM 3064	MS 3064-MS 3068		HMV 64E	HM 3072	HMV 72E	23068K • C 3068K
AH 3168	AOH 3168	320	340	225	TR 370X5	26,20	9.7	G1/8"	HM 3164	MS 3164		HMV 64E	HM 74T	HMV 74E	23168K
AH 3168 G	AOH 3168 G	320	340	225	TR 360X5	24,80	9.7	G1/8"	HM 3064	MS 3064-MS 3068		HMV 64E	HM 3172	HMV 72E	23168K • C 3168K

\* Exemplo do código da rosca: TR 300X4 TR:rosca métrica trapezoidal, 300: diâmetro da rosca, 4: passo da rosca

## BUCHA DE DESMONTAGEM AH, AHX, AOH, AOHX



BUCHA DE DESMONTAGEM  
AH, AHX



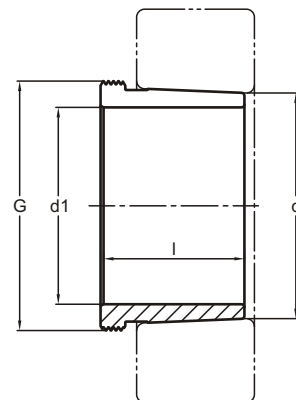
BUCHA DE DESMONTAGEM HIDRÁULICA  
AOH, AOHX

Código	Código Hidráulica	d1 mm	d mm	l mm	G*	Peso Kg	HIDRÁULICA			PORCA + TRAVA DE MONTAGEM		FERRAMENTAS DE MONTAGEM		FERRAMENTAS DE DESMONTAGEM		
							A	G1	M8	Porca para montagem	Dispositivo de segurança	Chave de Gancho	Porca Hidráulica	Porca para desmontagem	Chave de Gancho	Porca Hidráulica
AH 3268	AOH 3268	320	340	264	TR 370X5	31,80	10.0	G1/8"	HM 3164	MS 3164			HMV 64E	HM 74T	HMV 74E	22368K
AH 3268 G	AOH 3268 G	320	340	264	TR 360X5	31,80	10.0	G1/8"	HM 3064	MS 3064-MS 3068			HMV 64E	HM 3172	HMV 72E	22368K
AH 3968	AOH 3968	320	340	112	TR 355X5	11,90		M8	HM 3064	MS 3064-MS 3068			HMV 64E	HMLL 71T		23968K
AH 24068	AOH 24068	320	340	206	TR 360X5	21,70	7.5	G1/8"	HM 3164	MS 3164			HMV 64E	HM 72T	HMV 72E	24068K30
AH 24168	AOH 24168	320	340	269	TR 360X5	27,10	8.0	G1/8"	HM 3164	MS 3164			HMV 64E	HM 72T	HMV 72E	24168K30
AH 3072	AOH 3072	340	360	167	TR 385X5	19,00	8.4	G1/8"	HM 3068	MS 3064-MS 3068			HMV 68E	HML 77T	HMV 77E	23072K
AH 3072 G	AOH 3072 G	340	360	167	TR 380X5	19,00	8.4	G1/8"	HM 3068	MS 3064-MS 3068			HMV 68E	HM 3076	HMV 76E	23072K • C 3072K
AH 3172	AOH 3172	340	360	229	TR 400X5	29,60	9.7	G1/8"	HM 3168	MS 3168-MS 3172			HMV 68E	HM 80T	HMV 80E	23172K
AH 3172 G	AOH 3172 G	340	360	229	TR 380X5	29,60	9.7	G1/8"	HM 3068	MS 3064-MS 3068			HMV 68E	HM 3176	HMV 76E	23172K • C 3172K
AH 3272	AOH 3272	340	360	274	TR 400X5	41,50		G1/8"	HM 3168	MS 3168-MS 3172			HMV 68E	HM 80T	HMV 80E	22372K
AH 3272 G	AOH 3272 G	340	360	274	TR 380X5	41,50		G1/8"	HM 3068	MS 3064-MS 3068			HMV 68E	HM 3176	HMV 76E	22372K
AH 3972	AOH 3972	340	360	112	TR 375X5	12,60		M8	HM 3068	MS 3064-MS 3068			HMV 68E	HMLL 75T		23972K
AH 24072	AOH 24072	340	360	206	TR 380X5	22,70	7.5	G1/8"	HM 3168	MS 3168-MS 3172			HMV 68E	HM 76T	HMV 76E	24072K30
AH 24172	AOH 24172	340	360	269	TR 380X5	27,00	7.95	G1/8"	HM 3168	MS 3168-MS 3172			HMV 68E	HM 76T	HMV 76E	24172K30
AH 3076	AOH 3076	360	380	170	TR 410X5	21,40	8.4	G1/8"	HM 3072	MS 3072			HMV 72E	HML 82T	HMV 82E	23076K
AH 3076 G	AOH 3076 G	360	380	170	TR 400X5	21,40	8.4	G1/8"	HM 3072	MS 3072			HMV 72E	HM 3080	HMV 80E	23076K • C 3076K
AH 3176	AOH 3176	360	380	232	TR 420X5	35,70	9.7	G1/8"	HM 3172	MS 3168-MS 3172			HMV 72E	HM 84T	HMV 84E	23176K
AH 3176 G	AOH 3176 G	360	380	232	TR 400X5	35,70	9.7	G1/8"	HM 3072	MS 3072			HMV 72E	HM 3180	HMV 80E	23176K • C 3176K
AH 3276	AOH 3276	360	380	284	TR 420X5	45,60		G1/8"	HM 3172	MS 3168-MS 3172			HMV 72E	HM 84T	HMV 84E	22376K
AH 3276 G	AOH 3276 G	360	380	284	TR 400X5	45,60		G1/8"	HM 3072	MS 3072			HMV 72E	HM 3180	HMV 80E	22376K
AH 3976	AOH 3976	360	380	130	TR 395X5	15,40		M8	HM 3072	MS 3072			HMV 72E	HMLL 79T		23976K
AH 24076	AOH 24076	360	380	208	TR 400X5	23,70	7.5	G1/8"	HM 3172	MS 3168-MS 3172			HMV 72E	HM 80T	HMV 80E	24076K30
AH 24176	AOH 24176	360	380	271	TR 400X5	28,80	8.0	G1/8"	HM 3172	MS 3168-MS 3172			HMV 72E	HM 80T	HMV 80E	24176K30
AH 3080	AOH 3080	380	400	183	TR 430X5	27,30	8.7	G1/8"	HM 3076	MS 3076-MS 3080			HMV 76E	HML 86T	HMV 86E	23080K
AH 3080 G	AOH 3080 G	380	400	183	TR 420X5	27,30	8.7	G1/8"	HM 3076	MS 3076-MS 3080			HMV 76E	HM 3084	HMV 84E	23080K • C 3080K
AH 3180	AOH 3180	380	400	240	TR 440X5	39,50	9.7	G1/8"	HM 3176	MS 3176			HMV 76E	HM 88T	HMV 88E	23180K
AH 3180 G	AOH 3180 G	380	400	240	TR 420X5	39,50	9.7	G1/8"	HM 3076	MS 3076-MS 3080			HMV 76E	HM 3184	HMV 84E	23180K • C 3180K
AH 3280	AOH 3280	380	400	302	TR 440X5	51,70	10.9	G1/8"	HM 3176	MS 3176			HMV 76E	HM 88T	HMV 88E	22380K
AH 3280 G	AOH 3280 G	380	400	302	TR 420X5	51,70	10.9	G1/8"	HM 3076	MS 3076-MS 3080			HMV 76E	HM 3184	HMV 84E	22380K
AH 3980	AOH 3980	380	400	130	TR 415X5	16,60		M8	HM 3076	MS 3076-MS 3080			HMV 76E	HMLL 83T		23980K
AH 24080	AOH 24080	380	400	228	TR 420X5	27,10	7.5	G1/8"	HM 3176	MS 3176			HMV 76E	HM 84T	HMV 84E	24080K30
AH 24180	AOH 24180	380	400	278	TR 420X5	34,40	8.0	G1/8"	HM 3176	MS 3176			HMV 76E	HM 84T	HMV 84E	24180K30
AH 3084	AOH 3084	400	420	186	TR 450X5	29,00	8.7	G1/8"	HM 3080	MS 3076-MS 3080			HMV 80E	HML 90T	HMV 90E	23084K
AH 3084 G	AOH 3084 G	400	420	186	TR 440X5	29,00	8.7	G1/8"	HM 3080	MS 3076-MS 3080			HMV 80E	HM 3088	HMV 88E	23084K • C 3084K
AH 3184	AOH 3184	400	420	266	TR 460X5	46,50	10.2	G1/8"	HM 3180	MS 3180-MS 3184			HMV 80E	HM 92T	HMV 92E	23184K

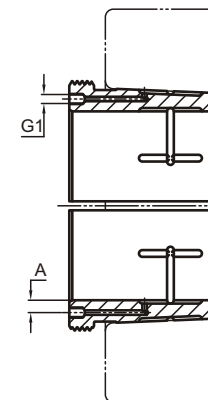
\* Exemplo do código da rosca: TR 300X4 TR:rosca métrica trapezoidal, 300: diâmetro da rosca, 4: passo da rosca



## BUCHA DE DESMONTAGEM AH, AHX, AOH, AOHX



BUCHA DE DESMONTAGEM  
AH, AHX

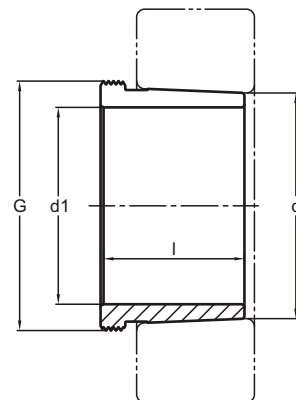


BUCHA DE DESMONTAGEM HIDRÁULICA  
AOH, AOHX

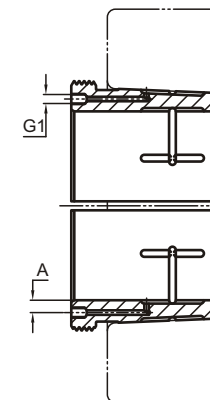
Código	Código Hidráulica	d1 mm	d mm	l mm	G*	Peso Kg	PORCA + TRAVA DE MONTAGEM			FERRAMENTAS DE MONTAGEM		FERRAMENTAS DE DESMONTAGEM			
							HIDRÁULICA A	G1	Porca para montagem	Dispositivo de segurança	Chave de Gancho	Porca Hidráulica	Porca para desmontagem	Chave de Gancho	Porca Hidráulica
AH 3184 G	AOH 3184 G	400	420	266	TR 440X5	46,50	10.2	G1/8"	HM 3080	MS 3076-MS 3080		HMV 80E	HM 3188	HMV 88E	23184K • C 3184K
AH 3284	AOH 3284	400	420	321	TR 460X5	58,90		G1/8"	HM 3180	MS 3180-MS 3184		HMV 80E	HM 92T	HMV 92E	22384K
AH 3284 G	AOH 3284 G	400	420	321	TR 440X5	58,90		G1/8"	HM 3080	MS 3076-MS 3080		HMV 80E	HM 3188	HMV 88E	22384K
AH 3984	AOH 3984	400	420	130	TR 435X5	17,50		M8	HM 3080	MS 3076-MS 3080		HMV 80E	HMLL 87T		23984K
AH 24084	AOH 24084	400	420	230	TR 440X5	27,40	7.5	G1/8"	HM 3180	MS 3180-MS 3184		HMV 80E	HM 88T	HMV 88E	24084K30
AH 24184	AOH 24184	400	420	310	TR 440X5	40,30	8.2	G1/8"	HM 3180	MS 3180-MS 3184		HMV 80E	HM 88T	HMV 88E	24184K30
AHX 3088	AOHX 3088	420	440	194	TR 470X5	32,00	8.7	G1/8"	HM 3084	MS 3084		HMV 84E	HML 94T	HMV 94E	23088K
AHX 3088 G	AOHX 3088 G	420	440	194	TR 460X5	32,00	8.7	G1/8"	HM 3084	MS 3084		HMV 84E	HM 3092	HMV 92E	23088K • C 3088K
AHX 3188	AOHX 3188	420	440	270	TR 480X5	49,80	10.2	G1/8"	HM 3184	MS 3180-MS 3184		HMV 84E	HM 96T	HMV 96E	23188K
AHX 3188 G	AOHX 3188 G	420	440	270	TR 460X5	49,80	10.2	G1/8"	HM 3084	MS 3084		HMV 84E	HM 3192	HMV 92E	23188K • C 3188K
AHX 3288	AOHX 3288	420	440	330	TR 480X5	63,80		G1/8"	HM 3184	MS 3180-MS 3184		HMV 84E	HM 96T	HMV 96E	22388K
AHX 3288 G	AOHX 3288 G	420	440	330	TR 460X5	64,50		G1/8"	HM 3084	MS 3080-MS 3184		HMV 84E	HM 3192	HMV 92E	22388K
AH 3988	AOH 3988	420	440	145	TR 460X5	21,50		G1/8"	HM 3084	MS 3084		HMV 84E	HMLL 92T	HMV 92E	23988K
AH 24088	AOH 24088	420	440	242	TR 460X5	31,90	7.7	G1/8"	HM 3184	MS 3180-MS 3184		HMV 84E	HM 92T	HMV 92E	24088K30
AH 24188	AOH 24188	420	440	310	TR 460X5	42,30	8.2	G1/8"	HM 3184	MS 3180-MS 3184		HMV 84E	HM 92T	HMV 92E	24188K30
AHX 3092	AOHX 3092	440	460	202	TR 490X5	35,20	9.0	G1/8"	HM 3088	MS 3088-MS 3092		HMV 88E	HML 98T	HMV 98E	23092K
AHX 3092 G	AOHX 3092 G	440	460	202	TR 480X5	35,20	9.0	G1/8"	HM 3088	MS 3088-MS 3092		HMV 88E	HM 3096	HMV 96E	23092K • C 3092K
AHX 3192	AOHX 3192	440	460	285	TR 510X6	57,90	10.5	G1/8"	HM 3188	MS 3188-MS 3192		HMV 88E	HM 102T	HMV 102E	23192K
AHX 3192 G	AOHX 3192 G	440	460	285	TR 480X5	57,90	10.5	G1/8"	HM 3088	MS 3088-MS 3092		HMV 88E	HM 3196	HMV 96E	23192K • C 3192K
AHX 3292	AOHX 3292	440	460	349	TR 510X6	74,50		G1/8"	HM 3188	MS 3188-MS 3192		HMV 88E	HM 102T	HMV 102E	22392K
AHX 3292 G	AOHX 3292 G	440	460	349	TR 480X5	80,00		G1/8"	HM 3088	MS 3088-MS 3092		HMV 88E	HM 3196	HMV 96E	22392K
AH 3992	AOH 3992	440	460	145	TR 480X5	22,50		G1/8"	HM 3088	MS 3088-MS 3092		HMV 88E	HMLL 96T	HMV 96E	23992K
AH 24092	AOH 24092	440	460	250	TR 480X5	34,70	7.7	G1/8"	HM 3188	MS 3188-MS 3192		HMV 88E	HM 96T	HMV 96E	24092K30
AH 24192	AOH 24192	440	460	332	TR 480X5	47,40	8.45	G1/8"	HM 3188	MS 3188-MS 3192		HMV 88E	HM 96T	HMV 96E	24192K30 • C 4192K30
AHX 3096	AOHX 3096	460	480	205	TR 520X6	39,20	9.0	G1/8"	HM 3092	MS 3088-MS 3092		HMV 92E	HML 104T	HMV 104E	23096K
AHX 3096 G	AOHX 3096 G	460	480	205	TR 500X5	39,20	9.0	G1/8"	HM 3092	MS 3088-MS 3092		HMV 92E	HM 30/500	HMV 100E	23096K • C 3096K
AHX 3196	AOHX 3196	460	480	295	TR 530X6	63,10	10.5	G1/8"	HM 3192	MS 3188-MS 3192		HMV 92E	HM 106T	HMV 106E	23196K
AHX 3196 G	AOHX 3196 G	460	480	295	TR 500X5	63,10	10.5	G1/8"	HM 3092	MS 3088-MS 3092		HMV 92E	HM 31/500	HMV 100E	23196K • C 3196K
AHX 3296	AOHX 3296	460	480	364	TR 530X6	82,10		G1/8"	HM 3192	MS 3188-MS 3192		HMV 92E	HM 106T	HMV 106E	22396K
AHX 3296 G	AOHX 3296 G	460	480	364	TR 500X5	81,00		G1/8"	HM 3092	MS 3088-MS 3092		HMV 92E	HM 31/500	HMV 100E	22396K
AH 3996	AOH 3996	460	480	158	TR 500X5	26,00		G1/8"	HM 3092	MS 3088-MS 3092		HMV 92E	HMLL 100T	HMV 100E	23996K
AH 24096	AOH 24096	460	480	250	TR 500X5	36,60	7.7	G1/8"	HM 3192	MS 3188-MS 3192		HMV 92E	HMLL 100T	HMV 100E	24096K30
AH 24196	AOH 24196	460	480	343	TR 500X5	52,70	8.5	G1/8"	HM 3192	MS 3188-MS 3192		HMV 92E	HMLL 100T	HMV 100E	24196K30
AHX 30/500	AOHX 30/500	480	500	209	TR 540X6	42,50	9.0	G1/8"	HM 3096	MS 3096-30/500		HMV 96E	HML 108T	HMV 108E	230/500K
AHX 30/500 G	AOHX 30/500 G	480	500	209	TR 530X6	42,50	9.0	G1/8"	HM 3096	MS 3096-30/500		HMV 96E	HM 30/530	HMV 106E	230/500K • C 30/500K00K • C 31/500K

\* Exemplo do código da rosca: TR 300X4 TR:rosca métrica traapezoidal, 300: diâmetro da rosca, 4: passo da rosca

## BUCHA DE DESMONTAGEM AH, AHX, AOH, AOHX



BUCHA DE DESMONTAGEM  
AH, AHX

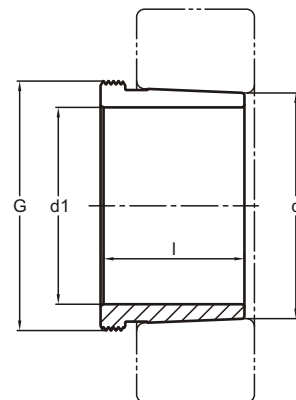


BUCHA DE DESMONTAGEM HIDRÁULICA  
AOH, AOHX

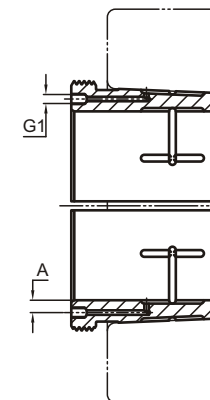
Código	Código Hidráulica	d1 mm	d mm	l mm	G*	Peso Kg	PORÇA + TRAVA DE MONTAGEM			FERRAMENTAS DE MONTAGEM		FERRAMENTAS DE DESMONTAGEM		
							HIDRÁULICA A	G1	Porça para montagem	Dispositivo de segurança	Chave de Gancho	Porça Hidráulica	Porça para desmontagem	Chave de Gancho
AHX 31/500	AOHX 31/500	480	500	313	TR 550X6	70,90	11.0	G1/8"	HM 3196	MS 3196	HMV 96E	HM 110T	HMV 110E	231/500K
AHX 31/500 G	AOHX 31/500 G	480	500	313	TR 530X6	70,90	11.0	G1/8"	HM 3096	MS 3096-30/500	HMV 96E	HM 31/530	HMV 106E	231/500K • C 31/500K
AHX 32/500	AOHX 32/500	480	500	393	TR 550X6	94,60		G1/8"	HM 3196	MS 3196	HMV 96E	HM 110T	HMV 110E	223/500K
AHX 32/500 G	AOHX 32/500 G	480	500	393	TR 530X6	89,50		G1/8"	HM 3096	MS 3096	HMV 96E	HM 31/530	HMV 106E	223/500K
AH 39/500	AOH 39/500	480	500	162	TR 520X6	28,00		G1/8"	HM 3096	MS 3096-30/500	HMV 96E	HMLL 104T	HMV 104E	239/500K
AH 240/500	AOH 240/500	480	500	253	TR 520X6	35,40	7.7	G1/8"	HM 3196	MS 3196	HMV 96E	HMLL 104T	HMV 104E	240/500K30
AH 241/500	AOH 241/500	480	500	362	TR 530X6	59,10	8.7	G1/8"	HM 3196	MS 3196	HMV 96E	HM 106T	HMV 106E	241/500K30 • C 41/500K30
AH 30/530	AOH 30/530	500	530	230	TR 560X6	61,90		G1/4"	HM 30/500	MS 3096-30/500	HMV 100E	HML 112T	HMV 112E	230/530K • C 30/530K
AH 31/530	AOH 31/530	500	530	325	TR 560X6	93,40		G1/4"	HM 31/500	MS 31/500	HMV 100E	HML 112T	HMV 112E	222/530K • 231/530K • C 31/530K
AH 32/530	AOH 32/530	500	530	412	TR 580X6	133,0		G1/4"	HM 31/500	MS 31/500	HMV 100E	HM 116T	HMV 116E	223/530K • 232/530K
AH 32/530 G	AOH 32/530 G	500	530	412	TR 560X6	133,0		G1/4"	HM 30/500	MS 3096-30/500	HMV 100E	HM 31/560	HMV 112E	223/530K • 232/530K
AH 39/530	AOH 39/530	500	530	175	TR 550X6	43,40		G1/4"	HM 30/500	MS 3096-30/500	HMV 100E	HMLL 110T	HMV 110E	239/530K
AH 240/530	AOH 240/530	500	530	290	TR 550X6	66,90	11.5	G1/4"	HM 31/500	MS 31/500	HMV 100E	HMLL 110T	HMV 110E	240/530K30
AH 240/530 G	AOH 240/530 G	500	530	290	TR 560X6	66,90	11.5	G1/4"	HM 30/500	MS 3096-30/500	HMV 100E	HM 31/560	HMV 112E	240/530K30
AH 241/530	AOH 241/530	500	530	375	TR 550X6	88,40		G1/4"	HM 31/500	MS 31/500	HMV 100E	HMLL 110T	HMV 110E	241/530K30
AH 241/530 G	AOH 241/530 G	500	530	375	TR 560X6	88,40		G1/4"	HM 30/500	MS 3096-30/500	HMV 100E	HM 31/560	HMV 112E	241/530K30
AH 30/560	AOH 30/560	530	560	240	TR 590X6	68,60		G1/4"	HM 30/530	MS 30/530-600	HMV 106E	HM L 118T		230/560K • C 30/560K
AH 31/560	AOH 31/560	530	560	335	TR 590X6	102,0		G1/4"	HM 31/530	MS 31/530	HMV 106E	HML 118T		222/560K • 231/560K • C 31/560K
AH 32/560	AOH 32/560	530	560	422	TR 610X6	145,0		G1/4"	HM 31/530	MS 31/530	HMV 106E	HM 122T		223/560K • 232/560K
AH 39/560	AOH 39/560	530	560	180	TR 580X6	47,40	11.3	G1/4"	HM 30/530	MS 30/530-600	HMV 106E	HMLL 116T	HMV 116E	239/560K
AH 240/560	AOH 240/560	530	560	298	TR 580X6	73,00	12.32	G1/4"	HM 31/530	MS 31/530	HMV 106E	HMLL 116T	HMV 116E	240/560K30
AH 240/560 G	AOH 240/560 G	530	560	298	TR 600X6	73,00	12.32	G1/4"	HM 30/530	MS 30/530-600	HMV 106E	HM 31/600	HMV 120E	240/560K30
AH 241/560	AOH 241/560	530	560	400	TR 580X6	100,0		G1/4"	HM 31/530	MS 31/530	HMV 106E	HMLL 116T	HMV 116E	241/560K30
AH 241/560 G	AOH 241/560 G	530	560	400	TR 600X6	100,0		G1/4"	HM 30/530	MS 30/530-600	HMV 106E	HM 31/600	HMV 120E	241/560K30
AH 30/600	AOH 30/600	560	600	245	TR 630X6	75,40		G1/4"	HM 30/560	MS 30/560	HMV 112E	HML 126T	HMV 126E	230/600K • C 30/600K
AH 31/600	AOH 31/600	560	600	355	TR 630X6	118,0		G1/4"	HM 31/560	MS 31/560-600	HMV 112E	HML 126T	HMV 126E	222/600K • 231/600K • C 31/600K
AH 32/600	AOH 32/600	560	600	445	TR 650X6	167,0	14.0	G1/4"	HM 31/560	MS 31/560-600	HMV 112E	HM 130T	HMV 130E	223/600K • 232/600K
AH 32/600 G	AOH 32/600 G	560	600	445	TR 630X6	167,0		G1/4"	HM 30/560	MS 30/560	HMV 112E	HM 31/630	HMV 126E	223/600K 232/600K
AH 39/600	AOH 39/600	560	600	192	TR 625X6	56,10		G1/4"	HM 30/560	MS 30/560	HMV 112E	HMLL 125T		239/600K
AH 240/600	AOH 240/600	560	600	317	TR 625X6	86,0		G1/4"	HM 31/560	MS 31/560-600	HMV 112E	HMLL 125T		240/600K30
AH 241/600	AOH 241/600	560	600	425	TR 625X6	118,0		G1/4"	HM 31/560	MS 31/560-600	HMV 112E	HMLL 125T		241/600K30
AH 30/630	AOH 30/630	600	630	210	TR 670X6	87,80		G1/4"	HM 30/600	MS 30/530-600	HMV 120E	HML 134T	HMV 134E	230/630K • C 30/630K
AH 31/630	AOH 31/630	600	630	375	TR 670X6	138,0		G1/4"	HM 31/600	MS 31/560-600	HMV 120E	HML 134T	HMV 134E	222/630K • 231/630K • C 31/630K
AH 32/630	AOH 32/630	600	630	475	TR 680X6	191,0	12.6	G1/4"	HM 31/600	MS 31/560-600	HMV 120E	HM 136T		223/630K • 232/630K
AH 32/630 G	AOH 32/630 G	600	630	475	TR 670X6	191,0		G1/4"	HM 30/600	MS 30/530-600	HMV 120E	HM 31/670	HMV 134E	223/630K • 232/630K

\* Exemplo do código da rosca: TR 300X4 TR:rosca métrica trapezoidal, 300: diâmetro da rosca, 4: passo da rosca

## BUCHA DE DESMONTAGEM AH, AHX, AOH, AOHX



BUCHA DE DESMONTAGEM  
AH, AHX

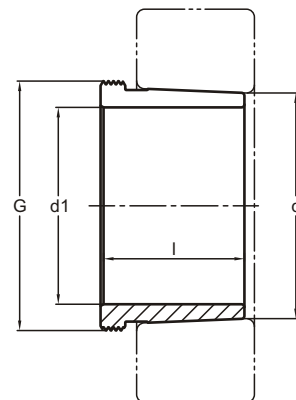


BUCHA DE DESMONTAGEM HIDRÁULICA  
AOH, AOHX

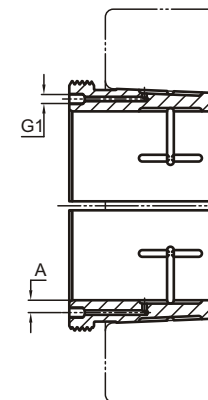
Código	Código Hidráulica	d1 mm	d mm	l mm	G*	Peso Kg	PORCA + TRAVA DE MONTAGEM			FERRAMENTAS DE MONTAGEM		FERRAMENTAS DE DESMONTAGEM			
							HIDRÁULICA A	Porca para montagem G1	Dispositivo de segurança	Chave de Gancho	Porca Hidráulica	Porca para desmontagem	Chave de Gancho	Porca Hidráulica	Rolamentos
AH 39/630	AOH 39/630	600	630	210	TR 655X6	62,8	G1/4"	HM 30/600	MS 30/530-600		HMV 120E	HMLL 131T			239/630K
AH 240/630	AOH 240/630	600	630	335	TR 655X6	95,5	G1/4"	HM 31/600	MS 31/560-600		HMV 120E	HMLL 131T			240/630K30
AH 240/630 G	AOH 240/630 G	600	630	335	TR 670X6	95,5	G1/4"	HM 30/600	MS 30/530-600		HMV 120E	HM 31/670	HMV 134E		240/630K30
AH 241/630	AOH 241/630	600	630	450	TR 655X6	135,0	G1/4"	HM 31/600	MS 31/560-600		HMV 120E	HMLL 131T			241/630K30
AH 241/630 G	AOH 241/630 G	600	630	450	TR 670X6	135,0	G1/4"	HM 30/600	MS 30/530-600		HMV 120E	HM 31/670	HMV 134E		241/630K30
AH 30/670	AOH 30/670	630	670	216	TR 710X7	124,0	G1/4"	HM 30/630	MS 30/630		HMV 126E	HML 142T	HMV 142E		230/670K • C 30/670K
AH 31/670	AOH 31/670	630	670	395	TR 710X7	187,0	G1/4"	HM 31/630	MS 31/630		HMV 126E	HML 142T	HMV 142E		222/670K • 231/670K • C 31/670K
AH 32/670	AOH 32/670	630	670	500	TR 720X7	256,0	G1/4"	HM 31/630	MS 31/630		HMV 126E	HM 144T			223/670K • 232/670K
AH 32/670 G	AOH 32/670 G	630	670	500	TR 710X7	256,0	G1/4"	HM 30/630	MS 30/630		HMV 126E	HM 31/710	HMV 142E		223/670K • 232/670K
AH 39/670	AOH 39/670	630	670	216	TR 695X6	85,5	G1/4"	HM 30/630	MS 30/630		HMV 126E	HMLL 139T			239/670K
AH 240/670	AOH 240/670	630	670	358	TR 695X6	136,0	G1/4"	HM 31/630	MS 31/630		HMV 126E	HMLL 139T			240/670K30
AH 240/670 G	AOH 240/670 G	630	670	358	TR 710X7	136,0	G1/4"	HM 30/630	MS 30/630		HMV 126E	HM 31/710	HMV 142E		240/670K30
AH 241/670	AOH 241/670	630	670	467	TR 695X6	183,0	G1/4"	HM 31/630	MS 31/630		HMV 126E	HMLL 139T			241/670K30
AH 30/710	AOH 30/710	670	710	286	TR 750X7	135,0	G1/4"	HM 30/670	MS 30/670		HMV 134E	HML 150T	HMV 150E		230/710K • C 30/710K
AH 31/710	AOH 31/710	670	710	405	TR 750X7	205,0	G1/4"	HM 31/670	MS 31/670		HMV 134E	HML 150T	HMV 150E		222/710K • 231/710K • C 31/710K
AH 32/710	AOH 32/710	670	710	515	TR 760X7	282,0	G1/4"	HM 31/670	MS 31/670		HMV 134E	HM 152T			223/710K • 232/710K
AH 32/710 G	AOH 32/710 G	670	710	515	TR 750X7	282,0	G1/4"	HM 30/670	MS 30/670		HMV 134E	HM 31/750	HMV 150E		223/710K • 232/710K
AH 39/710	AOH 39/710	670	710	228	TR 740X7	102,0	G1/4"	HM 30/670	MS 30/670		HMV 134E	HMLL 148T			239/710K
AH 240/710	AOH 240/710	670	710	365	TR 740X7	150,0	G1/4"	HM 31/670	MS 31/670		HMV 134E	HMLL 148T			240/710K30
AH 240/710 G	AOH 240/710 G	670	710	365	TR 750X7	150,0	G1/4"	HM 30/670	MS 30/670		HMV 134E	HM 31/750	HMV 150E		240/710K30 • C 40/710K30
AH 241/710	AOH 241/710	670	710	493	TR 740X7	209,0	G1/4"	HM 31/670	MS 31/670		HMV 134E	HMLL 148T			241/710K30
AH 30/750	AOH 30/750	710	750	300	TR 800X7	181,0	G1/4"	HM 30/710	MS 30/710		HMV 142E	HML 160T	HMV 160E		230/750K • C 30/750K
AH 31/750	AOH 31/750	710	750	425	TR 800X7	236,0	G1/4"	HM 31/710	MS 31/710	15.6	HMV 142E	HML 160T	HMV 160E		222/750K • 231/750K • C 31/750K
AH 32/750	AOH 32/750	710	750	540	TR 800X7	362,0	G1/4"	HM 31/710	MS 31/710		HMV 142E	HM 160T	HMV 160E		223/750K • 232/750K
AH 39/750	AOH 39/750	710	750	234	TR 780X7	99,2	G1/4"	HM 30/710	MS 30/710		HMV 142E	HMLL 156T			239/750K
AH 240/750	AOH 240/750	710	750	385	TR 780X7	170,0	G1/4"	HM 31/710	MS 31/710		HMV 142E	HMLL 156T			240/750K30
AH 240/750 G	AOH 240/750 G	710	750	385	TR 800X7	170,0	G1/4"	HM 30/710	MS 30/710		HMV 142E	HM 31/800	HMV 160E		240/750K30
AH 241/750	AOH 241/750	710	750	530	TR 780X7	240,0	G1/4"	HM 31/710	MS 31/710		HMV 142E	HMLL 156T			241/750K30
AH 241/750 G	AOH 241/750 G	710	750	530	TR 800X7	240,0	G1/4"	HM 30/710	MS 30/710		HMV 142E	HM 31/800	HMV 160E		241/750K30
AH 30/800	AOH 30/800	750	800	308	TR 850X7	200,0	G1/4"	HM 30/750	MS 30/750-800		HMV 150E	HML 170T	HMV 170E		230/800K • C 30/800K
AH 31/800	AOH 31/800	750	800	438	TR 850X7	234,0	G1/4"	HM 31/750	MS 31/750-800		HMV 150E	HML 170T	HMV 170E		222/800K • 231/800K • C 31/800K
AH 32/800	AOH 32/800	750	800	550	TR 850X7	403,0	G1/4"	HM 31/750	MS 31/750-800		HMV 150E	HM 170T	HMV 170E		232/800K
AH 32/800 G	AOH 32/800 G	750	800	550	TR 850X7	403,0	G1/4"	HM 30/750	MS 30/750-800		HMV 150E	HM 31/850	HMV 170E		232/800K
AH 39/800	AOH 39/800	750	800	245	TR 830X7	147,0	G1/4"	HM 30/750	MS 30/750-800		HMV 150E	HMLL 166T			239/800K
AH 240/800	AOH 240/800	750	800	395	TR 830X7	304,0	G1/4"	HM 31/750	MS 31/750-800		HMV 150E	HMLL 166T			240/800K30

\* Exemplo do código da rosca: TR 300X4 TR:rosca métrica trapezoidal, 300: diâmetro da rosca, 4: passo da rosca

## BUCHA DE DESMONTAGEM AH, AHX, AOH, AOHX



BUCHA DE DESMONTAGEM  
AH, AHX



BUCHA DE DESMONTAGEM HIDRÁULICA  
AOH, AOHX

Código	Código Hidráulica	d1 mm	d mm	l mm	G*	Peso Kg	HIDRÁULICA A	PORCA + TRAVA DE MONTAGEM		FERRAMENTAS DE MONTAGEM		FERRAMENTAS DE DESMONTAGEM			
								Porca para montagem	Dispositivo de segurança	Chave de Gancho	Porca Hidráulica	Porca para desmontagem	Chave de Gancho	Porca Hidráulica	Rolamentos
AH 240/800 G	AOH 240/800 G	750	800	395	TR 850X7	304,0	G1/4"	HM 30/750	MS 30/750-800						
AH 241/800	AOH 241/800	750	800	530	TR 830X7	306,0	G1/4"	HM 31/750	MS 31/750-800	HMV 150E	HMLL 166T	HM 31/850	HMV 170E	240/800K30	
AH 241/800 G	AOH 241/800 G	750	800	530	TR 850X7	306,0	G1/4"	HM 30/750	MS 30/750-800	HMV 150E	HM 31/850		HMV 170E	241/800K30	
AH 30/850	AOH 30/850	800	850	325	TR 900X7	226,0	G1/4"	HM 30/800	MS 30/750-800	HMV 160E	HML 180T		HMV 180E	230/850K • C 30/850K	
AH 31/850	AOH 31/850	800	850	462	TR 900X7	252,0	G1/4"	HM 31/800	MS 31/750-800	HMV 160E	HML 180T		HMV 180E	222/850K • 231/850K • C 31/850K	
AH 32/850	AOH 32/850	800	850	585	TR 900X7	458,0	G1/4"	HM 31/800	MS 31/750-800	HMV 160E	HM 180T		HMV 180E	232/850K	
AH 39/850	AOH 39/850	800	850	258	TR 880X7	166,0	G1/4"	HM 30/800	MS 30/750-800	HMV 160E	HMLL 176T			239/850K	
AH 240/850	AOH 240/850	800	850	418	TR 880X7	342,0	G1/4"	HM 31/800	MS 31/750-800	HMV 160E	HMLL 176T			240/850K30	
AH 240/850 G	AOH 240/850 G	800	850	418	TR 900X7	342,0	G1/4"	HM 30/800	MS 30/750-800	HMV 160E	HM 31/900		HMV 180E	240/850K30	
AH 241/850	AOH 241/850	800	850	560	TR 880X7	344,0	G1/4"	HM 31/800	MS 31/750-800	HMV 160E	HMLL 176T			241/850K30	
AH 30/900	AOH 30/900	850	900	335	TR 950X8	248,0	G1/4"	HM 30/850	MS 30/850-900	HMV 170E	HML 190T		HMV 190E	230/900K • C 30/900K	
AH 31/900	AOH 31/900	850	900	475	TR 950X8	276,0	G1/4"	HM 31/850	MS 31/850	HMV 170E	HML 190T		HMV 190E	222/900K • 231/900K	
AH 32/900	AOH 32/900	850	900	585	TR 950X8	485,0	G1/4"	HM 31/850	MS 31/850	HMV 170E	HM 190T		HMV 190E	232/900K	
AH 39/900	AOH 39/900	850	900	265	TR 930X8	182,0	G1/4"	HM 30/850	MS 30/850-900	HMV 170E	HMLL 186T			239/900K	
AH 240/900	AOH 240/900	850	900	430	TR 930X8	375,0	G1/4"	HM 31/850	MS 31/850	HMV 170E	HMLL 186T			240/900K30	
AH 241/900	AOH 241/900	850	900	575	TR 930X8	372,0	G1/4"	HM 31/850	MS 31/850	HMV 170E	HMLL 186T			241/900K30	
AH 30/950	AOH 30/950	900	950	355	TR 1000X8	279,0	G1/4"	HM 30/900	MS 30/850-900	HMV 180E	HM 200T		HMV 200E	230/950K • C 30/950K	
AH 31/950	AOH 31/950	900	950	500	TR 1000X8	318,0	G1/4"	HM 31/900	MS 31/900	HMV 180E	HM 200T		HMV 200E	222/950K • 231/950K	
AH 32/950	AOH 32/950	900	950	600	TR 1000X8	527,0	G1/4"	HM 31/900	MS 31/900	HMV 180E	HM 200T		HMV 200E	232/950K	
AH 39/950	AOH 39/950	900	950	282	TR 980X8	206,0	G1/4"	HM 30/900	MS 30/850-900	HMV 180E	HMLL 196T			239/950K	
AH 240/950	AOH 240/950	900	950	467	TR 980X8	422,0	G1/4"	HM 31/900	MS 31/900	HMV 180E	HMLL 196T			240/950K30	
AH 241/950	AOH 241/950	900	950	605	TR 980X8	423,0	G1/4"	HM 31/900	MS 31/900	HMV 180E	HMLL 196T			241/950K30	
AH 30/1000	AOH 30/1000	950	1000	365	TR 1060X8	312,0	G1/4"	HM 30/950	MS 30/950	HMV 190E	HML 212T		HMV 212E	230/1000K • C 30/1000K	
AH 31/1000	AOH 31/1000	950	1000	525	TR 1060X8	353,0	G1/4"	HM 31/950	MS 31/950	HMV 190E	HML 212T		HMV 212E	222/1000K • 231/1000K • C 31/1000K	
AH 32/1000	AOH 32/1000	950	1000	630	TR 1060X8	603,0	G1/4"	HM 31/950	MS 31/950	HMV 190E	HM 212T		HMV 212E	232/1000K	
AH 39/1000	AOH 39/1000	950	1000	296	TR 1035X8	232,0	G1/4"	HM 30/950	MS 30/950	HMV 190E	HMLL 207T			239/1000K	
AH 240/1000	AOH 240/1000	950	1000	469	TR 1035X8	482,0	G1/4"	HM 31/950	MS 31/950	HMV 190E	HMLL 207T			240/1000K30	
AH 241/1000	AOH 241/1000	950	1000	645	TR 1035X8	482,0	G1/4"	HM 31/950	MS 31/950	HMV 190E	HMLL 207T			241/1000K30	
AH 30/1060	AOH 30/1060	1060	1000	385	TR 1120X8	400,0	G1/4"	HM 30/1000	MS 30/1000	HMV 200E	HML 224T		HMV 224E	230/1060K	
AH 31/1060	AOH 31/1060	1060	1000	540	TR 1120X8	440,0	G1/4"	HM 31/1000	MS 31/1000	HMV 200E	HML 224T		HMV 224E	222/1060K • 231/1060K	
AH 39/1060	AOH 39/1060	1060	1010	310	TR 1095X8	259,0	G1/4"	HM 30/1000	MS 30/1000	HMV 200E	HMLL 219T			239/1060K	
AH 240/1060	AOH 240/1060	1060	1000	498	TR 1095X8	595,0	G1/4"	HM 31/1000	MS 31/1000	HMV 200E	HMLL 219T			240/1060K30	
AH 241/1060	AOH 241/1060	1060	1000	665	TR 1095X8	605,0	G1/4"	HM 31/1000	MS 31/1000	HMV 200E	HMLL 219T			241/1060K30	

\* Exemplo do código da rosca: TR 300X4 TR:rosca métrica trapezoidal, 300: diâmetro da rosca, 4: passo da rosca